

Sample of Anti-vortex pool drain covers.

MAIN DRAIN SUMMARY CHART

This page was last updated on 

This summary is of common main drain covers and grates. This summary does not include all covers. This information is based on manufacture's information whenever available. The pictures show the cover with its base setting on concrete. Installed in a pool, the plaster will cover the base and only the top of the grate or cover will be visible.

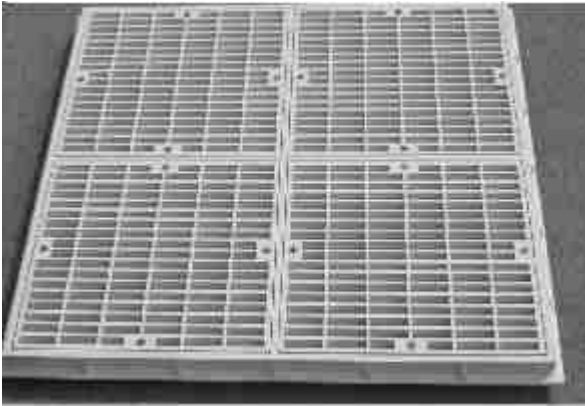


GRATE 18"x18"

Manufacturer: Pentair

Maximum Flow at 535 G.P.M.

Open area = 115 sq. inches



GRATE 18"x18"

Manufacturer: Hayward, Pac Fab and others

Maximum Flow at 1.5 FPS

Hayward : 756 PM (168 In²)

PacFab: 918 GPM (196 In²)

Notes: 18x18 grates measure 24" diagonally, so ASME/ANSI A112 certification is not required. In many applications, this type cover is ideal because it does not protrude up from the pool surface creating a toe stub hazard and can handle high flow rates.

Sample of Anti-vortex pool drain covers.



GRATE 12"X12"

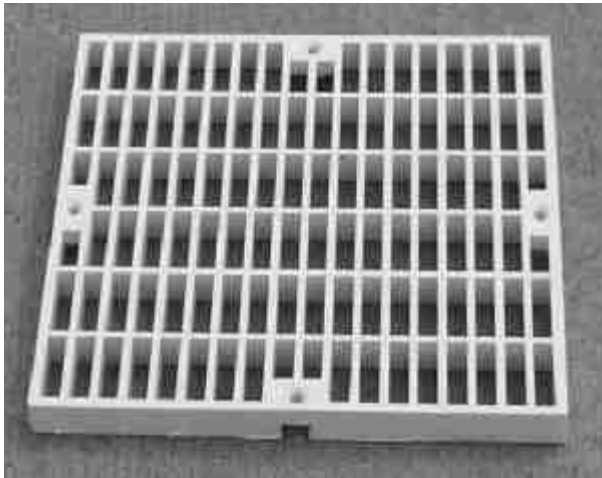
Manufacturer: Hayward, Pac Fab **N.L.A** and others

Maximum Flow at 1.5 FPS

Hayward : 306 GPM (68 In²)

PacFab: 401 GPM (85 In²)

Notes: 12X12 grates do not measure 24" diagonally, so ASME/ANSI A112 certification is required. However, there are no A112 approved replacement covers available at this time. Until they are available, these grates may be used, but flow rates must not be exceeded. When A112 approved covers become available,, these grates will need to be replaced.



GRATE 9"X9"

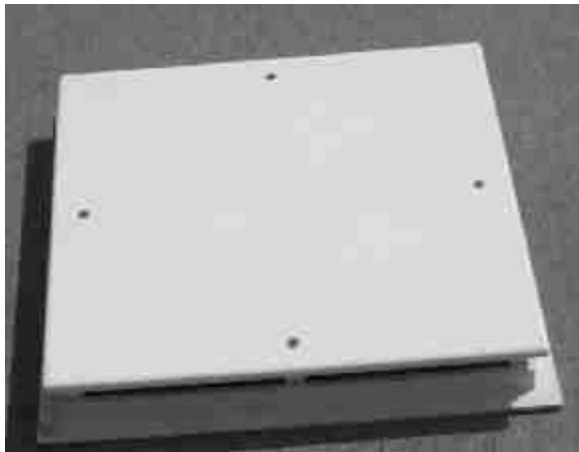
Manufacturer: Hayward, Pac Fab and others

Maximum Flow at 1.5 FPS

Hayward : 198 GPM (44 In²)

PacFab: 229 GPM (49 In²)

Notes: 9X9 grates do not measure 24" diagonally, so ASME/ANSI A112 certification is required. However, there are no A112 approved replacement covers available at this time. Until they are available, these grates may be used, but flow rates must not be exceeded. When A112 approved covers become available,, these grates will need to be replaced.



Pac Fab 12"X12" Anti Vortex Cover

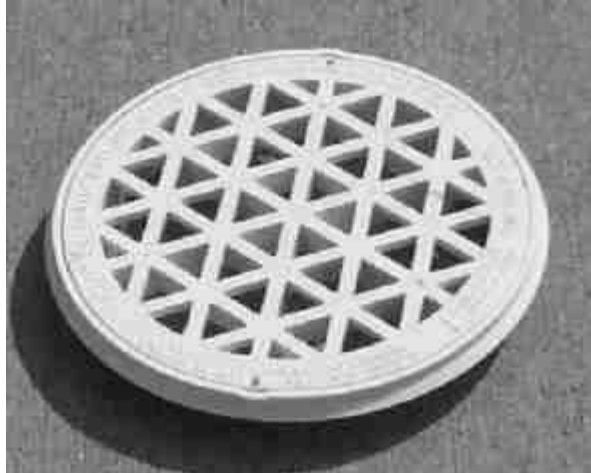
Manufacturer: Pac Fab

Maximum Flow at 1.5 FPS

142 OPM(31.5 In²)

Notes: This 12X12 cover is NOT ASME/ANSI A112 approved. However, there are no A112 approved replacement covers available at this time. Until they are available, this cover may be used, but flow rates must not be exceeded. When A112 approved covers become available, these covers will need to be replaced. Note: Cover has no name or markings.

Sample of Anti-vortex pool drain covers.



Flat Grate, under 10" diameter

Manufacturer: Various

Maximum Flow at 1.5 FI'S

Not Acceptable

These grates are not allowed. They must be replaced with an A1 12 approved cover by the same manufacturer or an A1 12 approved universal cover.



Pac Fab 8" Anti Vortex

Manufacturer: Pac Fab N.L.A.

Maximum Flow at 1.5 FPS

Not Acceptable

This cover is not A112 approved and is not allowed. They must be replaced with an A112 approved cover by the same manufacturer or an A112 approved universal cover.

This cover has 4 screw holes on top and typically no name or markings.



Purex 8 1/16" Anti Vortex

Manufacturer: Purex N.L.A. (Pac Fab)

Maximum Flow at 1.5 FPS

Not Acceptable

This cover is not A112 approved an is not allowed. They must be replaced with an A112 approved cover by the same manufacturer or an A112 approved universal cover.

This cover has 4 screw holes on top, a domed shape and square holes around the sides

Sample of Anti-vortex pool drain covers.



APP 7 7/8 Anti Vortex

Manufacturer: Advanced Pool Products **N.L.A.**

**Maximum Flow at 1.5 FPS
Not Acceptable**

This cover is not A112 approved and is not allowed. They must be replaced with an A112 approved cover by the same manufacturer or an A112 approved universal cover. This cover has 2 screw holes on top, a slightly domed shape and round holes around the sides. There is an APP logo on the top center.



American Products Anti Vortex 8610590

Manufacturer: Pac Fab

**Maximum Flow at 1.5 FPS
Unknown**

This cover is UL listed at 80 GPM, Pentair Sources indicate that it is ANSI/ASME A112 approved.



Hayward SP1048 Anti Vortex

Manufacturer: Hayward

**Maximum Flow at 1.5 FPS
Haywood sources indicate cover is acceptable to the
A112.19.8M standard.**

This cover has 2 screw holes on top, a domed shape and rectangular holes around the sides. There is an "H" (Hayward) logo on the top center.

Sample of Anti-vortex pool drain covers.



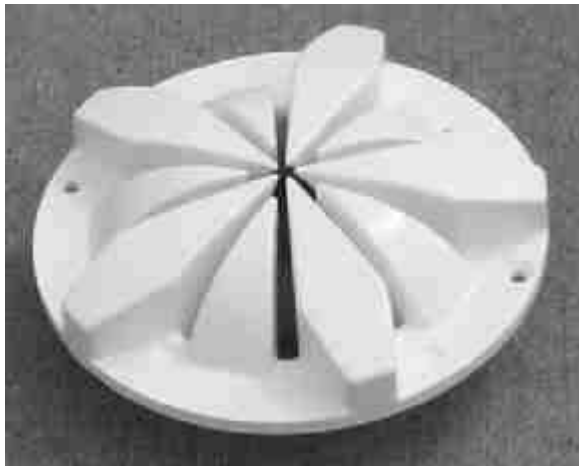
Sta Rite 8" Anti Vortex 0712-0741

Manufacturer: Sta Rite

**Maximum Flow, ANSI/ASME A112 Rating
60 GPM**

This cover is A112 approved at 60 GPM

The Sta Rite cover is flat on the top with a circle in the center.
Water is drawn in on the elevated sides..



Anti Hair Snare Plus

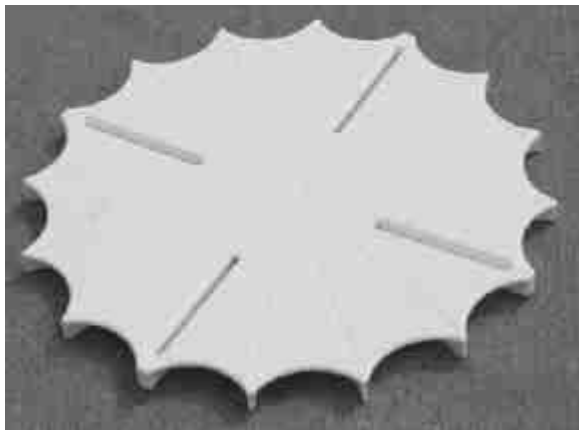
Manufacturer: Triodyne Systems

**Maximum Flow, ANSI/ASME A112 Rating
109 GPM**

This cover is A112 approved at 109 GPM

The Anti Hair Snare cover has multiple "peddles" that are at different heights. The hole in the center is designed to allow hair that might be trapped to slip out the center. The Anti Hair Snare is a universal cover that fits most existing sumps up to 8".

Different holes are drilled out, depending on the existing sump



Star 100 Anti Entrapment Cover

Manufacturer: World Wide Sports

**Maximum Flow, ANSI/ASME A112 Rating
80 GPM**

This cover is A112 approved at 80 GPM

The Star 100 has a distinctive star shape, designed to prevent body entrapment. The four slots allow different screw patterns so the cover can fit any sump up to 10 inches.

Sample of Anti-vortex pool drain covers.



DS 360

The DS 360 has a Safe Flow Rate not to exceed 123 gallons per minute. Retrofits up to 2-1/2" pipe. Manufactured of high quality Ridged Vinyl Compound (PVC): meets the NSF 50/ASME/ANSI A112.19.8, Standard, 27 sq. inches open surface area., includes Uni-Screw (316 grade) stainless steel screws and security tool included. Comes in a sealed container to insure all parts intact.

Manufactured by: New Water Solutions, Inc. of Topton, NC.

Primus Main Drain

Manufacturer: Gary Equipment Co

Maximum Flow Rate at 1.5 FPS:
132.6 GPM



This cover has slotted area of 24.25 x 3.21, so it's diagonal measurement is over 24" as required for grates. The grate is also designed to snap out of place in case of hair entrapment. Screws are not used to attach the grate, per manufacturer's specifications, the grate snaps into place.